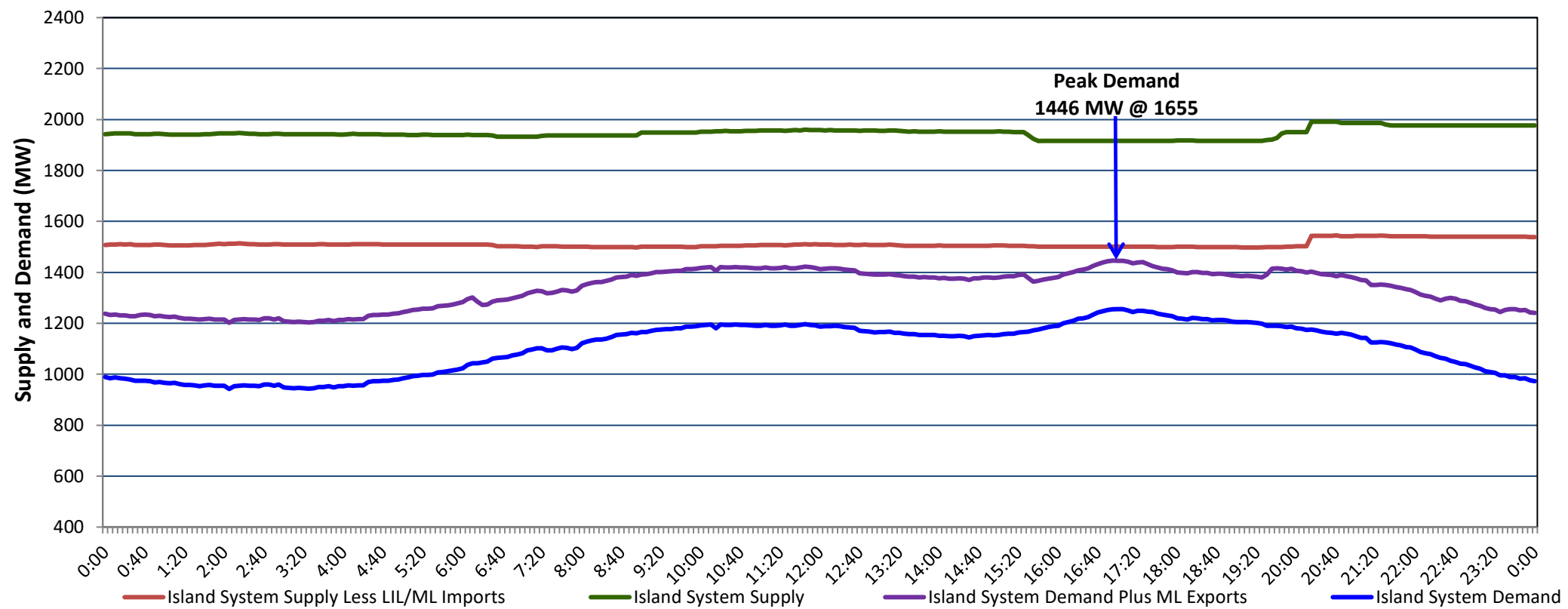


**Newfoundland Labrador Hydro (NLH)  
Supply and Demand Status Report Filed Tuesday, November 14, 2023**

**Section 1  
Island Interconnected System Supply, Demand & Exports  
Actual 24 Hour System Performance For Monday, November 13, 2023**



**Supply Notes For November 13, 2023**

- 1,2
- A As of 0701 hours, March 06, 2023, Upper Salmon Unit unavailable (84 MW).
  - B As of 0800 hours, May 21, 2023, Holyrood Unit 2 unavailable due to planned outage (170 MW).
  - C As of 2059 hours, July 13, 2023, Stephenville Gas Turbine unavailable (50 MW).
  - D As of 0827 hours, October 15, 2023, St. Anthony Diesel Plant available at 7.7 MW (9.7 MW).
  - E As of 0035 hours, October 28, 2023, Holyrood Unit 3 available at 50 MW (150 MW).
  - F As of 2238 hours, November 11, 2023, Holyrood Unit 1 available at 130 MW (170 MW).
  - G **At 2015 hours, November 13, 2023, Granite Canal Unit available (40 MW).**

**Section 2  
Island Interconnected Supply and Demand**

| Tue, Nov 14, 2023                            | Island System Outlook <sup>3</sup> | Seven-Day Forecast           | Temperature (°C) |         | Island System Daily Peak Demand (MW) |                       |
|--|------------------------------------|------------------------------|------------------|---------|--------------------------------------|-----------------------|
|  |                                    |                              | Morning          | Evening | Forecast                             | Adjusted <sup>7</sup> |
| Available Island System Supply: <sup>5</sup> | 1,987 MW                           | Tuesday, November 14, 2023   | -1               | -1      | 1,475                                | 1,388                 |
| NLH Island Generation: <sup>4,8</sup>        | 1,245 MW                           | Wednesday, November 15, 2023 | 0                | 0       | 1,200                                | 1,116                 |
| NLH Island Power Purchases: <sup>6</sup>     | 75 MW                              | Thursday, November 16, 2023  | 0                | -2      | 1,220                                | 1,136                 |
| Other Island Generation:                     | 220 MW                             | Friday, November 17, 2023    | 0                | 0       | 1,185                                | 1,101                 |
| ML/LIL Imports:                              | 447 MW                             | Saturday, November 18, 2023  | 0                | 4       | 1,105                                | 1,022                 |
| Current St. John's Temperature & Windchill:  | -1 °C -5 °C                        | Sunday, November 19, 2023    | 8                | 11      | 1,005                                | 923                   |
| 7-Day Island Peak Demand Forecast:           | 1,475 MW                           | Monday, November 20, 2023    | 9                | 5       | 1,080                                | 998                   |

**Supply Notes For November 14, 2023**

- 3
- Notes:
1. Generation outages for running and corrective maintenance are included. These are not unusual for power system operations. They generally do not impact customer supply. The power system operators schedule outages to system equipment whenever possible to coincide with periods when customer demands are low and sufficient supply reserves are available. However, from time to time equipment outages are necessary and reserves may be impacted.
  2. Due to the Island system having no synchronous connections to the larger North American grid, when there is a sudden loss of large generating units there may be a requirement for some customer's load to be interrupted for short periods to bring generation output equal to customer demand. This automatic action of power system protection, referred to as under frequency load shedding (UFLS), is necessary to ensure the integrity and reliability of system equipment. Under frequency events have typically occurred 5 to 8 times per year on the Island Interconnected System and the resultant customer load interruptions are generally less than 30 minutes. With the activation of the Maritime Link frequency controller during the winter of 2018, UFLS events have occurred less frequently.
  3. As of 0800 Hours.
  4. Gross output including station service at Holyrood (24.5 MW) and improved NLH hydraulic output due to water levels (35 MW).
  5. Gross output from all Island sources (including Note 4).
  6. NLH Island Power Purchases include: CBPP Co-Gen, Nalcor Exploits, Rattle Brook, Star Lake, Wind Generation and capacity assistance (when applicable).
  7. Adjusted for curtailable load, market activities and the impact of voltage reduction when applicable.
  8. Due to limitations inherent in the design of combustion turbines, the output of combustion turbines may be reduced in the event that ambient temperatures exceed the threshold

**Section 3  
Island Peak Demand Information  
Previous Day Actual Peak and Current Day Forecast Peak**

|                   |  |       |          |
|-------------------|--|-------|----------|
| Mon, Nov 13, 2023 | Actual Island Peak Demand <sup>9</sup> | 16:55 | 1,446 MW |
| Tue, Nov 14, 2023 | Forecast Island Peak Demand            |       | 1,475 MW |

Notes: 9. Island Demand / LIL / ML Exports (where applicable) is supplied by NLH generation and purchases, plus generation owned and operated by Newfoundland Power and Corner Brook Pulp & Paper (Deer Lake Power, DLP).